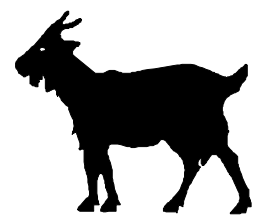


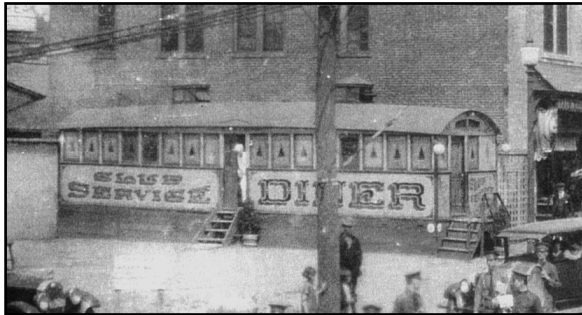
# Nannygoats



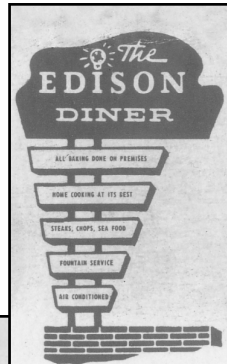
Vol. 4 Issue 3

Newsletter of the Metuchen-Edison Historical Society

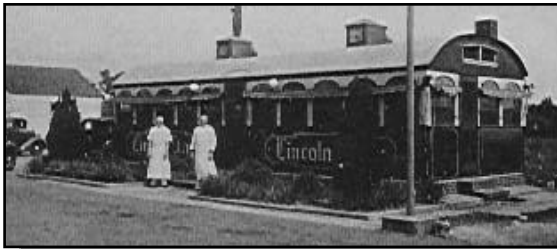
Fall 2006



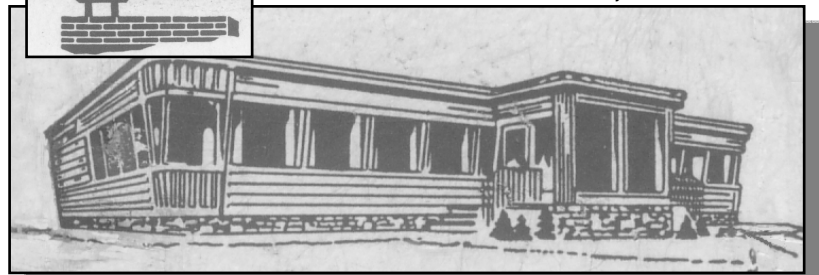
The "Club Service" Diner just north of the train station on Main Street in Metuchen.



The Esquire Diner on Route 1 at Wooding Avenue in Edison, the current site of the Skylark Diner.



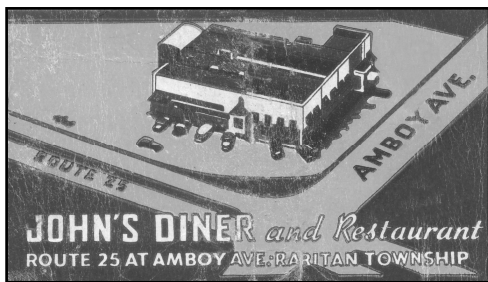
The Lincoln Diner on Route 1 in Edison, exact location unknown.



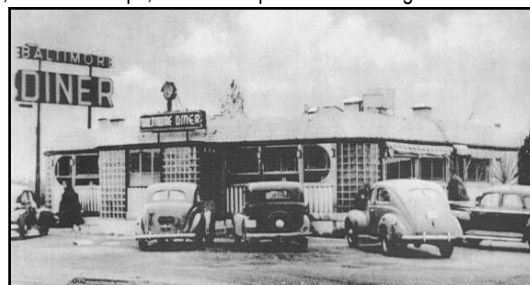
The Edison Diner on Route 1 at Plainfield Avenue in Edison, now the site of a gas station.

## Diners Du Jour

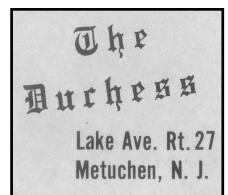
Feast on the past with history ala carte! These images are from the Metuchen-Edison Historical Society's collection of photographs, postcards, matchbook covers, and more in the Grimstead Archives. While these fine diners are now gone, except for The Duchess on Lake Avenue in Metuchen, their friendly service, steaks & chops, and on-the-premises baked goods are far from forgotten.



John's Diner on Amboy Avenue near Route 1 in Edison.



The Baltimore Diner on Route 1 at Plainfield Avenue in Edison, across from where the Edison Diner (above) later stood.



The Menlo Coach Diner on Route 1 in Edison – now rebuilt as the Menlo Park Diner.



The Parsonage Diner at Route 27 and Parsonage Road in Edison.

**The Metuchen-Edison Historical Society was founded in 1974 with the primary purpose of promoting an interest in and appreciation of the history of the Borough of Metuchen and of Edison Township.**